



## 53222 Thrust ball bearings, single direction

- Popular item

### Thrust ball bearings, single direction

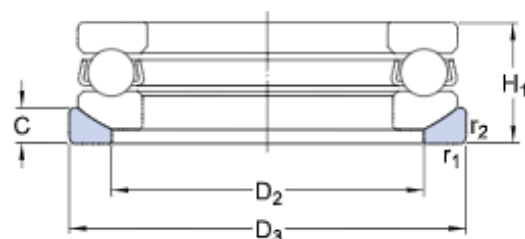
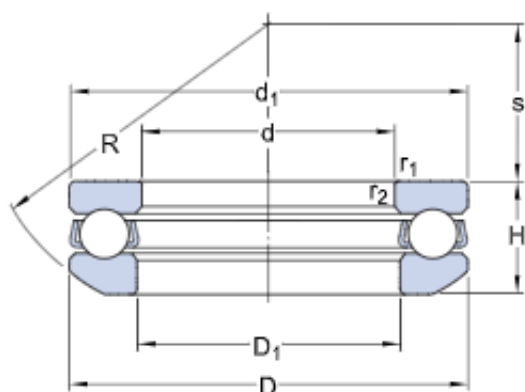
#### Bearing data

[Tolerances,](#)  
table 1

#### Bearing interfaces

[Seat tolerances for standard](#)  
[conditions,](#)  
[Tolerances and resultant fit](#)

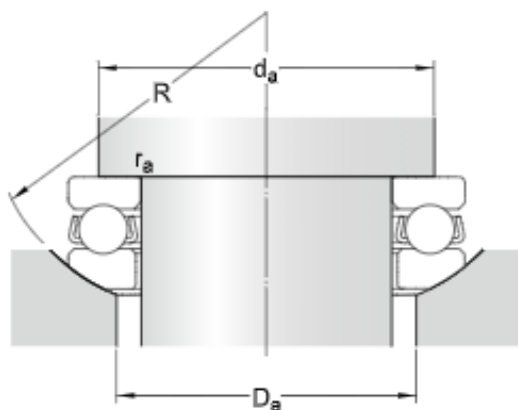
### Technical specification



#### DIMENSIONS

d	110 mm	Bore diameter
D	160 mm	Outside diameter
H	40.2 mm	Height
H <sub>1</sub>	45 mm	Height bearing including seat washer
d <sub>1</sub>	≈ 160 mm	Outside diameter shaft washer
D <sub>1</sub>	≈ 113 mm	Inner diameter housing washer
D <sub>2</sub>	135 mm	Inner diameter sphered seat washer
D <sub>3</sub>	165 mm	Outside diameter sphered housing washer
C	14 mm	Height sphered housing washer
R	125 mm	Radius sphered housing washer
s	65 mm	Centre height housing washer sphere
r <sub>1,2</sub>	min. 1.1 mm	Chamfer dimension washer

#### ABUTMENT DIMENSIONS



$d_a$  min. 140 mm Abutment diameter shaft

$D_a$  max. 135 mm Abutment diameter housing

$r_a$  max. 1 mm Fillet radius



## CALCULATION DATA

C	125 kN	Basic dynamic load rating
$C_0$	365 kN	Basic static load rating
$P_u$	11.6 kN	Fatigue load limit
	1 700 r/min	Reference speed
	2 400 r/min	Limiting speed
A	0.79	Minimum load factor

## MASS

2.91 kg	Mass bearing (including seat washer where applicable)
---------	---

## ASSOCIATED PRODUCTS